

Suction Cups for High-Temperature Applications

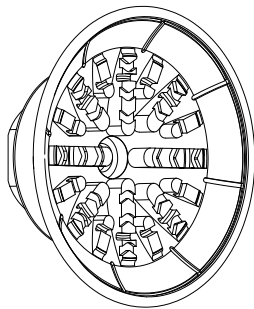
Flat Suction Cups MAF HT2

Suction area (ϕ) from 30 mm to 60 mm

Flat Suction Cups MAF HT2



System design flat suction cups MAF HT2



Introduction and application

- ◆ Round, flat suction cups for dynamic handling of hot metal sheets up to 250° C (short cycle times)
- ◆ Unloading of parts after forming
- ◆ Handling of thin aluminum sheets without deformation or deep drawing
- ◆ For use in feeder systems for press lines in the automotive industry

Design

- ◆ Robust and wear-resistant suction cup MAF HT2 with special inner support
- ◆ Suction cup vulcanized to the connection nipple (very high strength)

Ordering Guide Flat Suction Cups MAF HT2

Item no.	Suction area ϕ [mm]	Material and Shore hardness	Connection thread
MAF-HT2	30	HT2-65	G1/4-IG
	to		G1/4-AG
	60		G3/8-IG

Note:MAF HT2 AG=external thread (M) IG=internal thread (F)

Ordering Data Flat Suction Cups MAF HT2

Type	Dimensions[mm]		
	G1/4"-M	G1/4"-F	G3/8"-F
MAF 30 HT2-65	90.02.01.00563	90.02.01.00567	90.02.01.00571
MAF 40 HT2-65	90.02.01.00564	90.02.01.00568	90.02.01.00572
MAF 50 HT2-65	90.02.01.00565	90.02.01.00569	90.02.01.00573
MAF 60 HT2-65	90.02.01.00566	90.02.01.00570	90.02.01.00574

Combined Suction Cups

Vacuum Suction Cups

Composite Suction Cups

Special Grippers

Vacuum Gripping Systems

Mounting Elements

Vacuum Generators

Valve Technology

Switch And Monitoring

Vacuum Filters

Suction Cups for High-Temperature Applications



Flat Suction Cups MAF HT2

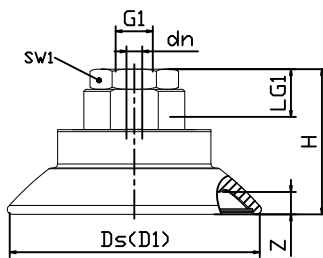
Suction area (ϕ) from 30 mm to 60 mm

Technical Data Flat Suction Cups MAF HT2

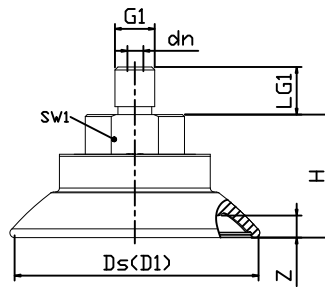
Type	Suction force [N]	Lateral force [N]	Volume [cm ³]	Min. curve radius [mm](convex)	Recom.internal hose diameter d[mm]
MAF 30 HT2-65	38	29	1.7	40	4
MAF 40 HT2-65	69	51	3.8	50	4
MAF 50 HT2-65	100	78	7.0	65	4
MAF 60 HT2-65	150	102	13.0	75	6

Design Data Flat Suction Cups MAF HT2

MAF HT2 30 to 60 IG



MAF HT2 30 to 60 AG



Type	Dimensions[mm]							
	Dmax(s)	dn	Ds	G1	H	LG1	SW1	Z(Stroke)
MAF 30 HT2-65 G1/4-AG	34	4	31	G1/4"-M	20	10	17	3
MAF 30 HT2-65 G1/4-IG	34	4	31	G1/4"-F	20	12	17	3
MAF 30 HT2-65 G3/8-IG	34	4	31	G3/8"-F	36	9	22	3
MAF 40 HT2-65 G1/4-AG	46	4	41	G1/4"-M	22	10	17	4
MAF 40 HT2-65 G1/4-IG	46	4	41	G1/4"-F	22	12	17	4
MAF 40 HT2-65 G3/8-IG	46	4	41	G3/8"-F	38	9	22	4
MAF 50 HT2-65 G1/4-AG	56	6	50	G1/4"-M	28	10	22	5
MAF 50 HT2-65 G1/4-IG	56	6	50	G1/4"-F	33	15	22	5
MAF 50 HT2-65 G3/8-IG	56	6	50	G3/8"-F	28	15	22	5
MAF 60 HT2-65 G1/4-AG	67	6	61	G1/4"-M	31	10	22	6
MAF 60 HT2-65 G1/4-IG	67	6	61	G1/4"-F	36	15	22	6
MAF 60 HT2-65 G3/8-IG	67	6	61	G3/8"-F	31	15	22	6